

**JTC** 金泰工業有限公司  
JIN TAY INDUSTRIES CO., LTD.

*Joining Technology  
Innovation  
and Convenience*

**GOOD LOCK**

WE'VE GOT SECURITY ON LOCK



>>Jin Tay Industries Co., Ltd.

Taiwan: No. 480, Sec. 3, Mingzhi Rd., Taishan Dist., New Taipei City 24355, Taiwan

TEL: +886 2 2907 1129 FAX: +886 2 2902 3039

E-mail: [jintay@jintay.com.tw](mailto:jintay@jintay.com.tw) [Http://www.jintay.com.tw](http://www.jintay.com.tw)

>>China: No. 165, LianFeng New Road., Dalingshan, DalingShan Town,

DongGuan City, GuangDong Province 523837, China

TEL: +86 769 8562 5888 FAX: +86 769 8562 5999

2023/10



SINCE 1980

*IoT system replacing traditional  
key access security system*

**SMART LOCKS.**



Jin Tay Group, is manufacturer since 1980, our factories located in Taipei and China. We specializes in the lock industry, and created own brand JTIC(Joining Technology, Innovation and Convenience) over 40 years. Products can be provided in chassis cabinet locks, computer 3C communication, vending machines, game machines, elevators, electric vehicles, alarm, smart home and RV supplies and other industries, Jin Tay products all over the global market.



SINCE 1980

IoT system replacing traditional key  
access security system

智能科技 高新企业 **JT** JTIC GROUP  
利泰物联网科技(广东)有限公司  
LEADTECH IOT TECHNOLOGY (GUANGDONG) CO., LTD

All products customized (ODM/OEM)

We've got security on lock.

Recently, Jin Tay Electronic smart locks, combined with Bluetooth NFC NB-IOT Wi-Fi , ZIGBEE LORA ETC., using APP, Mini program development and Management Cloud platform to provide IoT solutions for enterprises in various fields. Jin Tay has excellent engineering and manufacturing capabilities, and welcomes the project development of various smart locks.



## 【Model No. iT604】

**Features:** Bluetooth enabled Cam Lock + Key access

**Applications:** cabinets, lockers, ATM machine, vending machine, drop box, etc

**Specification:**

**Material:** Zinc Alloy

**Finishes:** Black nickel plated

**Power supply :** Dry cell battery

**Control Method:** Bluetooth 2.4 GHz

**Battery Included:** No

**Battery type:** 4xAA Battery

**Special Features:** LED indicator, RoHS Compliant, low battery warning(Beep)

**Components included:** Lock, Mechanical Key

### Description:

Transformed from traditional cam lock to high security, easy to use Bluetooth /APP operated lock. Simply use your phone as the key to operate and keep a record of time of use and user management.

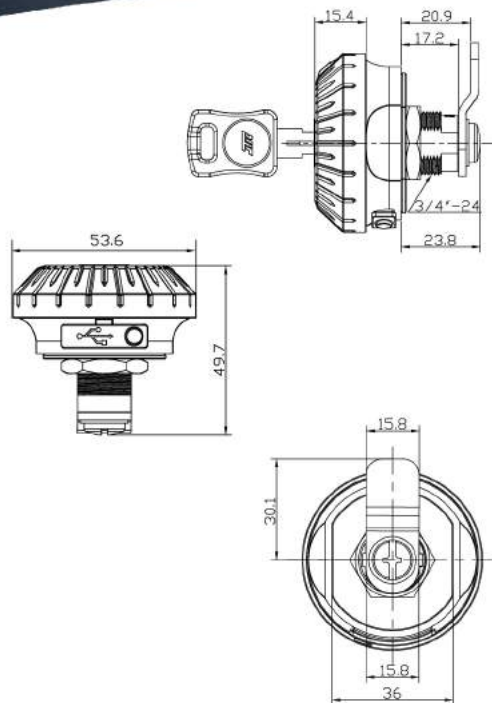
\* Dry cell batteries needed with type C charging port as out-of-battery backup power supply system

\* Up to 50,000 lock/unlock operations or 1 year on standby mode

\* Bluetooth connection with JTIC customized APP for lock/unlock operation and activities recordings.



# iT604



## 【Model No. iT605】

**Features:** Bluetooth enabled Cam Lock + Key access

**Applications:** cabinets, lockers, ATM machine, vending machine, drop box, etc

**Specification:**

**Material:** Zinc Alloy

**Finishes:** Satin Chrome plated

**Power supply:** Dry cell battery

**Control Method:** Bluetooth 2.4 GHz

**Battery Included:** No

**Battery type:** 4xAA Battery

**Special Features:** LED indicator, RoHS Compliant, low battery warning(Beep)

**Components included:** Lock, Mechanical Key

### Description:

Special latch design for high security, easy to use Bluetooth /APP operated lock.

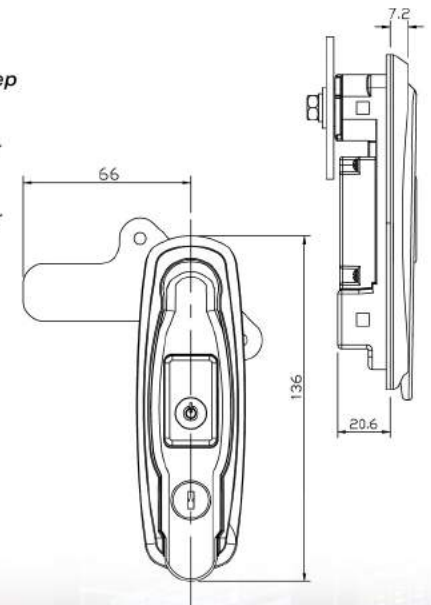
Simply use your phone as the key to operate and keep a record of time of use and user management.

\* Up to 50,000 lock/unlock operations or up to 1 year on standby mode

\* Bluetooth connection with JTIC customized APP for lock/unlock operation and activities recordings.



# iT605



## 【Model No. iT602】

### Features:

Touch Keypad + Key dual access cabinet lock

**Applications:** Lockers, file cabinets, Drop Boxes, and Office Cabinets

**Specification:** Material: Zinc Alloy

### Finishes:

Satin Nickel plated

Power supply: Dry Cell Battery

Control Method: Electronic Keypad + Key access

Battery Included: No

Battery type: 2x AA Battery

Special Features: LED indicator, RoHS Compliant, low batter warning (Beep)

Components included: Lock, 2 keys

### Description:

Easy access with one-time use combination code or master Key provided with the unit. The one time use code combination provide the security to the user without going through hassle of pre-setting to gain access

\* It is great item for public shared storage space.

Once the cabinet is unlocked, the unit erases the previous code. The master key gives the manager access to the locked unit prevent user gets locked out due to forget code.

\* Sleek numeric keypad for combination code access plus manager key to prevent user locked out or out of battery situation

\* Up to 1500 lock & unlock operations for each set of fresh 2x AA batteries



# iT602

## 【Model No. iT603】

**Features:** Touch Keypad + NFC Lock

**Applications:** Lockers, file cabinets, Drop Boxes, public storage units, mailboxes and gun storage cases

### Specification:

Material: Zinc Alloy

Finishes: Satin Chrome plated

Power supply : Dry Cell Battery

Control Method:

Digital numeric keypad + NFC Key card

Battery Included: No

Battery type: 4x AAAA Battery

Special Features: Anti-dust, Waterproof IP65, programmable NFC key cards for up to 10 users

Components included: Lock, 1x NFC key card

### Description:

\* Easy to use Multi function electronic locks provide up to 10 users with NFC user specific keyfob or 10 combination codes. More users available

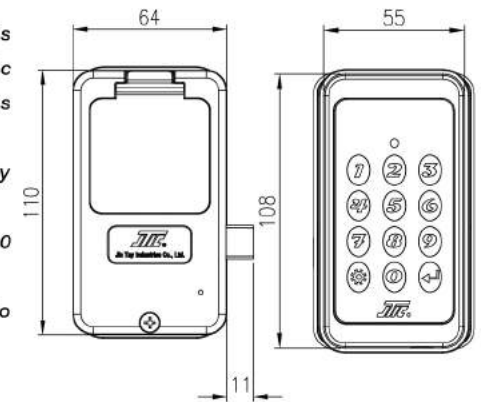
\* Micro USB charging port as out-of-battery emergency supply system.

\* Each set of new batteries provide up to 2000 lock & unlock operations.

\* Built-In reset button for system refresh to manufacturer setting.



# iT603





## 【Model No. iT611】

**Features:** NFC + Key dual access Electronic Lock

**Applications:** Lockers, file cabinets, drawers and Drop Boxes

**Specification:**

**Material:** Zinc Alloy

**Finishes:** Chrome plated

**Power supply:** Dry Cell Battery

**Control Method:** NFC Key card + Mechanical Key

**Battery Included:**No

**Battery type:** 1xAAA Battery

**Special Features:** Anti-dust, Waterproof IP54, programmable

NFC key cards for up to 10 users

**Components included:** Lock, 2xKeys, 1xNFC key card

### Description:

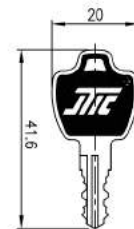
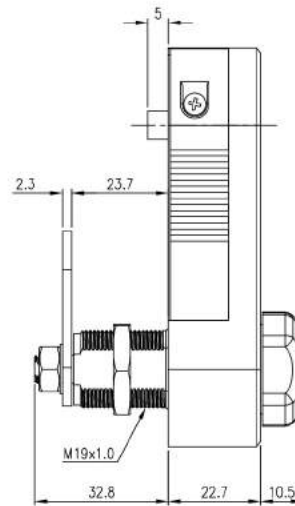
\* Electronic NFC Lock: using an easy to carry keyfob, access can be programmed(up to 10 users) for small offices, public space or shared by a private group.

\* Long Lasting Battery Life: up to 2500 lock/unlock operations or 1 year on standby mode

\* New technology with traditional mechanics: beautifully combined NFC feature with traditional mechanical key for easy access and yet never gets locked out



# iT611



## 【Model No. iT610】

**Features:** Biometric + Key dual access cabinet lock

**Applications:** Lockers, drawers cabinets

**Specification:**

**Material:** Zinc Alloy

**Finishes:** Chrome plated

**Power Supply:** Lithium rechargeable battery

**Control Method:** Biometric + Mechanical Key

**Battery Included:** Yes

**Battery type:** Li-polymer 330 mAh Lithium rechargeable battery

**Sensor Resolution:** 508DPI

**Resize:** 176 x 176 pixels

**FAR:** <0.001%

**FRR:** <1%

**ID Time:** <0.5 Sec.

**Special Features:** Anti-dust, Waterproof IP54 LED indicator, low battery warning(Beep)

**Components included:** Lock, 2xKeys

### Description:

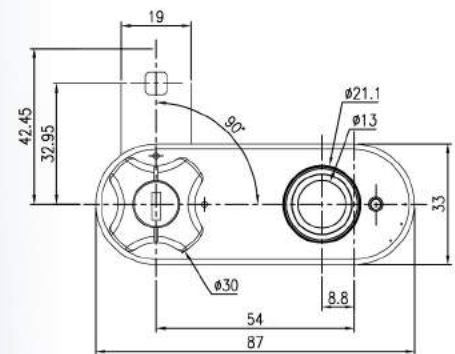
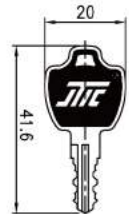
Fingerprint Lock: Never lose-a-key fingerprint cabinet lock provide high security, easy access and great design. Allows up to 10 fingerprints for different users.

Long Lasting Battery Life: up to 2500 lock/unlock operations or 1 year on standby mode

Micro USB charging port as out-of-battery emergency supply system



# iT610



## 【Model No. iT803】

**Features:** Fingerprint Padlock + TSA

**Applications:** Lockers, Luggages, Briefcases

**Specification:**

**Material:** Zinc Alloy

**Finishes:** Chrome Plated

**Power Supply:** Lithium rechargeable battery

**Control Method:** Biometric

**Battery Included:** Yes

**Battery type:** Li-polymer 50 mAh Lithium rechargeable battery

**Sensor Resolution:** 508DPI

**Resize:** 160 x 160 pixels

**FAR:** <0.001%

**FRR:** <1%

**ID Time:** <0.5 Sec.

**Special Features:** Anti-dust, Waterproof IP54 LED indicator, low battery warning(Beep)

**Components included:** Lock

**Description:**

\* Fingerprint Lock: Never lose-a-key fingerprint padlock provide high security, easy access and great design so you want to carry it everywhere you go. Allows up to 10 fingerprints for different users

\* Long Lasting Battery Life: up to 1500 lock/unlock operations or up to 6 months on standby mode

\* Micro USB charging port as out-of-battery emergency supply system



# iT803

## 【Model No. iT804】

**Features:** Fingerprint Padlock

**Applications:** Lockers, Luggages, Handbags

**Specification:**

**Material:** Zinc Alloy

**Finishes:** Black nickel plated

**Power Supply:** Lithium rechargeable battery

**Control Method:** Biometric

**Battery Included:** Yes

**Battery type:** Li-polymer 150 mAh Lithium rechargeable battery

**Sensor Resolution:** 508DPI

**Resize:** 256 x 256 pixels

**FAR:** <0.001%

**FRR:** <1%

**ID Time:** <0.5 Sec.

**Special Features:** Anti-dust, Waterproof IP54 LED indicator, low battery warning(Beep)

**Components included:** Lock

**Description:**

\* Fingerprint Lock: Never lose-a-key fingerprint padlock provide high security, easy access and great design so you want to carry it everywhere you go. Allows up to 10 fingerprints for different users

\* Long Lasting Battery Life: up to 2000 lock/unlock operations or up to 6 months on standby mode

\* Micro USB charging port as out-of-battery emergency supply system



# iT804

## 【Model No. iT806】

**Features:** Fingerprint Padlock

**Applications:** Lockers, Luggages, Handbags

**Specification:**

**Material:** Zinc Alloy

**Finishes:** Black e-coating plated

**Power Supply:** Lithium rechargeable battery

**Control Method:** Biometric

**Battery Included:** Yes

**Battery type:**

Li-polymer 70 mAh Lithium rechargeable battery

**Sensor Resolution:** 508DPI

**Resize:** 160 x 160 pixels

**FAR:** <0.001%

**FRR:** <1%

**ID Time:** <0.5 Sec.

**Special Features:** Anti-dust, Waterproof IP54 LED indicator, low battery warning (Beep)

**Components included:** Lock

**Description:**

\* Fingerprint Lock: Never lose-a-key fingerprint padlock provide high security, easy access and great design so you want to carry it everywhere you go. Allows up to 10 fingerprints for different users

\* Long Lasting Battery Life: up to 2000 lock/unlock operations or up to 6 months on standby mode

\* Micro USB charging port as out-of-battery emergency supply system



# iT806

